



Diamond[®]

VIBE™ SERIES

GUIDE TO PURESTYLE™

WHAT IS PURESTYLE?

STABLE AND DURABLE.

PureStyle combines the beauty of paint with resistance to moisture, warping, expansion and contraction, making it ideal for high moisture areas.

ENGINEERED FOR STRENGTH

Wrapped door and drawer front components offer a 5-piece construction that emulates the look of a painted door style. It's natural channel accepts fixative for improved door strength while reducing the ability for moisture to enter.

UNMATCHED BENEFITS.

With less visible changes to surface appearance due to use and aging, PureStyle offers stability and consistency over time.

A PROVEN PERFORMER.

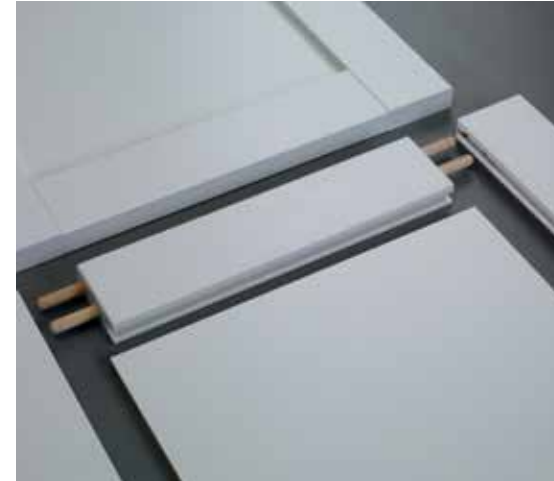
Like all Diamond® Vibe™ products, PureStyle has been subjected to rigorous KCMA performance testing and has met or exceeded all certification requirements.

CLEANS BEAUTIFULLY.

A clean cloth dampened with a solution of 5% dish soap and 95% water is all it takes to clean PureStyle cabinetry. Dry with a clean, soft cloth.

ON-TREND AND IN DEMAND.

PureStyle offers crisp, clean details and a quality finish. The added benefits of color consistency paired with the resistance to scratching, fading and surface water mean PureStyle delivers fashion without the fuss.



5-PIECE CONSTRUCTION.

As opposed to thermofoil, which is a routed slab product, PureStyle boasts a true 5-piece construction that effectively emulates the look of painted wood cabinets.



EXCEPTIONAL FINISH.

PureStyle features color consistency without the unpredictable variability often seen by various wood types. The surface regularity of PureStyle results in a fashionable, clean-lined aesthetic.

BREMAN

- Full Overlay
- Flat Panel Door
- Slab Drawer Front



Optional 5-Piece Drawer Front

LAWFORD

- Full Overlay
- Flat Panel Mitered Door
- Slab Drawer Front



Optional 5-Piece Drawer Front

BRYANT

- Full Overlay
- Flat Panel Door
- Slab Drawer Front



Optional 5-Piece Drawer Front

NEILSON

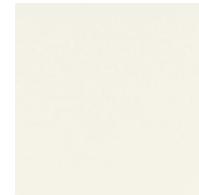
- Partial Overlay
- Flat Panel Mitered Door
- Slab Drawer Front



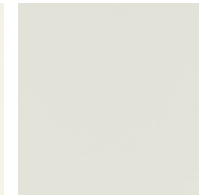
WENDELL

- Full Overlay
- Flat Panel Mitered Door
- 5-Piece Mitered Drawer Front

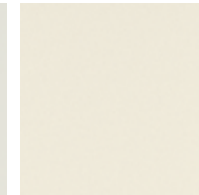
COLOR OPTIONS



White



Icy Avalanche



Coconut



Limestone



Cloud



Moonstone



Maritime



WESTBURKE

- Partial Overlay
- Flat Panel Door
- Slab Drawer Front

Diamond®

Make your mark.™



EDGE™ SERIES

Premium Semi-Custom Cabinetry



DISTINCTION™ SERIES

Semi-Custom Cabinetry



VIBE™ SERIES

Value Semi-Custom Cabinetry

Styles, product availability and construction may vary slightly from those shown in this book due to material availability and/or design evolution. Specifications are subject to change without notice. For more details, check with your designer.

Product photography and illustrations have been reproduced as accurately as printing technologies permit. To ensure highest satisfaction, we strongly recommend you view an actual sample for best color and finish representation.

Diamond® has a Limited Lifetime Warranty.

For terms and conditions, please visit: <https://www.diamondcabinets.com/warranty>

Cabinet Care and Cleaning Instructions: <https://www.masterbrand.com/care-and-cleaning>

Front Cover Image: LAWFORD PureStyle™ Limestone, Moonstone, Cloud, and Coconut



ANSI/ISOA A191.1



KITCHEN CABINET MANUFACTURERS ASSOCIATION
INTERNATIONAL, DIVISION OF PROUDER, INC.
ALL PRODUCTS MEET THE REQUIREMENTS
OF THE NATIONAL FOREST FOUNDATION



National Forest
Foundation



Part of the
MasterBrand™
Family

[diamondcabinets.com](https://www.diamondcabinets.com)

#DiamondCabinets

© 2021 MasterBrand Cabinets, Inc. All rights reserved.